

Select Property UK

The Box,
Brooke Court,
Lower Meadow Road,
Wilmslow, Cheshire
SK9 3ND

T. +44 (0) 161 488 3555
F. +44 (0) 161 485 8707
E. info@selectproperty.com

www.selectproperty.com

Select Group, UAE

Emaar Business Park,
Building 4,
Second Floor, Office 205
Sheikh Zayed Road
Dubai, UAE

T. +971 (4) 369 3355
F. +971 (4) 369 3344
E. info@selectproperty.com



THE POINT DUBAI MARINA



THE POINT DUBAI MARINA

Standing proudly at the widest section of Dubai Marina, The Point's prestigious promenade position is elevated further through one of the most innovative residential designs in all Dubai. Opposite the grand Dubai Yacht Club, resting perfectly between the crisp white sands of Jumeirah Beach, the renowned restaurants of the marina and amidst the most celebrated hotels in the Emirate, each and every Point apartment boasts uninterrupted views across this spectacular waterfront.

'A life where your terrace opens to views across **the largest marina in the world**'

DUBAI A CONTEMPORARY VISION

Located in the United Arab Emirates, and combining a humble seafaring heritage with a contemporary vision which knows no limits, Dubai is home to some of the most ambitious and elegant projects in the world. With a level of tranquillity which is unsurpassed and where opulence and quality are watchwords, it is no surprise that Dubai is fast becoming a residential paradise.

With year long sunshine, white sandy beaches and spectacular architecture, Dubai is rapidly becoming one of the most desirable destinations for visitors from every continent. Whether for business or pleasure this is a city with a complete vision, a city rich with every contemporary comfort, a city offering a lifestyle to match any of the world's most prestigious destinations.



Based upon a bedrock of safety, luxury and enjoyment coupled with a unique blend of natural retreats and Man-made wonders it is simple to see how this tax-free haven has not only established itself as the region's flourishing business centre but as a magnet for tourists and those seeking a luxuriant, prosperous lifestyle.



DUBAI LIFE A SPORTING CAPITAL

Dubai offers a unique blend of traditional and contemporary values and a lifestyle to compliment all tastes. From designer shops, award winning restaurants and exclusive bars, to local bazaars and bedouin camps. Sand safaris and camel rides are on offer for the more adventurous, whilst water parks and theme parks will keep the younger members of the family entertained.

As the sporting capital of the region, Dubai plays host to some of the most prestigious events on the world's sporting calendar, including the Dubai Tennis Open, golf's Dubai Desert Classic, the Dubai Rugby Sevens, the Dubai Grand Prix of Nations and the Dubai World Cup – the pinnacle of Dubai's horseracing calendar.

For water lovers Dubai is most celebrated for the Maktoum Sailing Trophy and the Dubai International Regatta hosted by the Dubai International Marine Club.

Dubai is famed for its fantastic sporting activities and offers an abundance of leisure facilities from skiing in the world's largest indoor snow dome to a round of golf at one of the emirates celebrated courses.



DUBAI MARINA

This cosmopolitan marina development combines a chic, vibrant style with all the tranquility and serenity expected of this exclusive waterside development. Dubai Marina is a place where you can stroll along the promenade, soak up the atmosphere of the yacht club or socialise with friends and colleagues at an array of the emirate's premier establishments.



Ideally located off the Sheikh Zayed Road and Jumeirah Beach, Dubai Marina is home to some of the emirates most exclusive hotels, premier beach clubs and finest restaurants. Within easy distance of the 7 star Burj Al Arab and the man-made palm island; celebrated as the eighth wonder of the world, it is plain to see why Dubai Marina is widely recognised as one of the world's foremost marinas and acknowledged as the height of Dubai living. Whether you are looking to pamper yourself, enjoy a leisurely afternoon or take to the water, Dubai Marina is ideally placed to satisfy your every desire.



Dubai Marina

TRANQUILITY

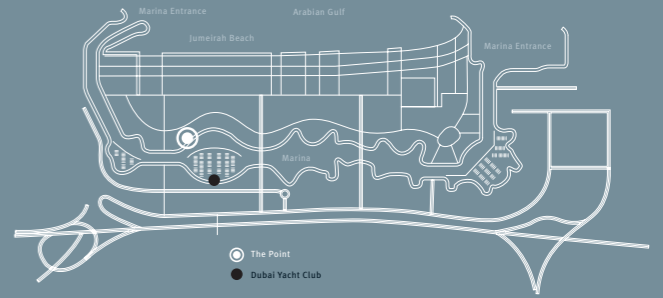
All the comfort and security of an exclusive waterfront community.

THE POINT DUBAI MARINA

This enviable 27 storey, 130 metre waterside development from award winning architects N.E.B. proudly showcases 188 properties distinctively offering 188 direct marina views spanning across the widest point of Dubai Marina and out to the grand Dubai Yacht Club.

At approximately 10 metres from the marina's edge, and in testament to this prestigious promenade position, The Point proudly brandishes a spacious pool deck running the length of its waterside location. This exclusive marina deck is comparable in size to that of many of the larger residential developments in Dubai and offers a number of climate-controlled pools as well as a shaded pool and deck area suitable for both children and adults.

Resting perfectly between the renowned sands of Jumeirah Beach and at the heart of Dubai Marina, The Point is positioned perfectly for the full and pleasurable exploration of Dubai. This much sought after marina address is located opposite the grand Dubai Yacht Club and the marina's primary shopping mall with water taxis on hand to ferry you to from Point to point.

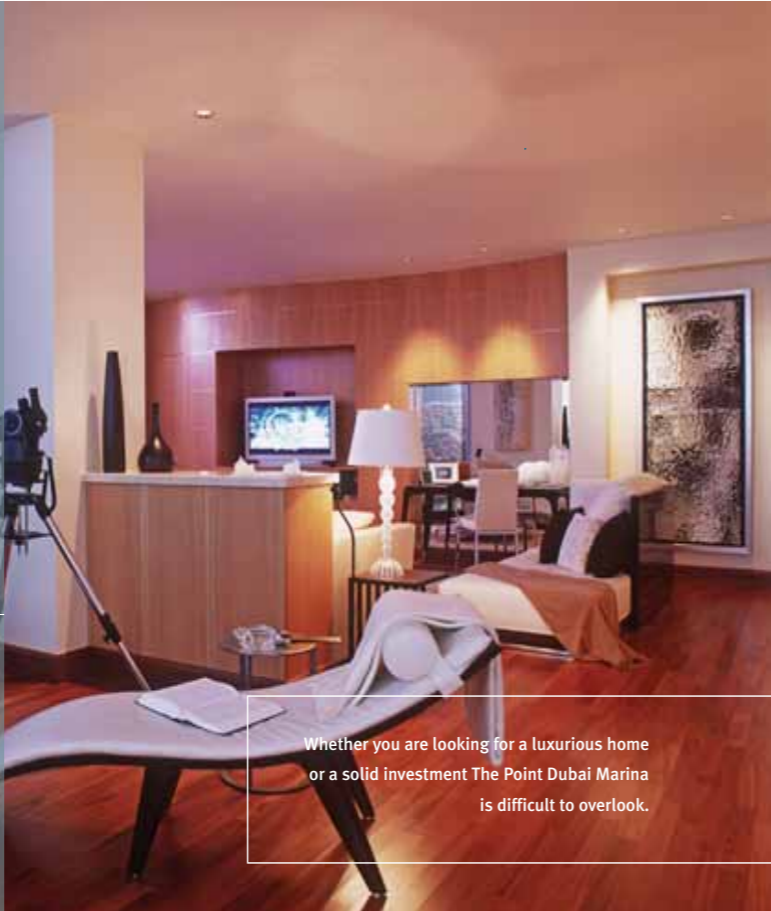


FACILITIES INCLUDE:

State of the art temperature-controlled swimming pools, Shaded pool area, Sauna, Steam room, Spa, Modern gymnasium, Shopping and dining facilities, Secure underground parking, 24 hour security, Concierge desk and spacious lobby, Professional housekeeping service, Children's play area, Barbeque deck 24 hour maintenance and supervision.

'A life where your terrace opens to views across the largest marina in the world'





Whether you are looking for a luxurious home or a solid investment The Point Dubai Marina is difficult to overlook.

THE POINT APARTMENTS

Each lustrous apartment offers large windows throughout, complete with exceptional balconies strategically positioned to fully exploit this tremendous marina location. Each apartment design is consistent in its commitment to modern living, featuring fully-finished stylish bathrooms, contemporary fitted kitchens and inclusive of internet and telecommunication systems throughout.

Further adding to the personality of this iconic property is the wide array of apartment layouts on offer. This characteristic design makes for a distinctive and interesting development that caters for many tastes. Uniquely this offers the opportunity to explore each apartment's individual appeal without having to compromise design in a quest for views of this spectacular waterfront.

STUDIO (2 & 5)

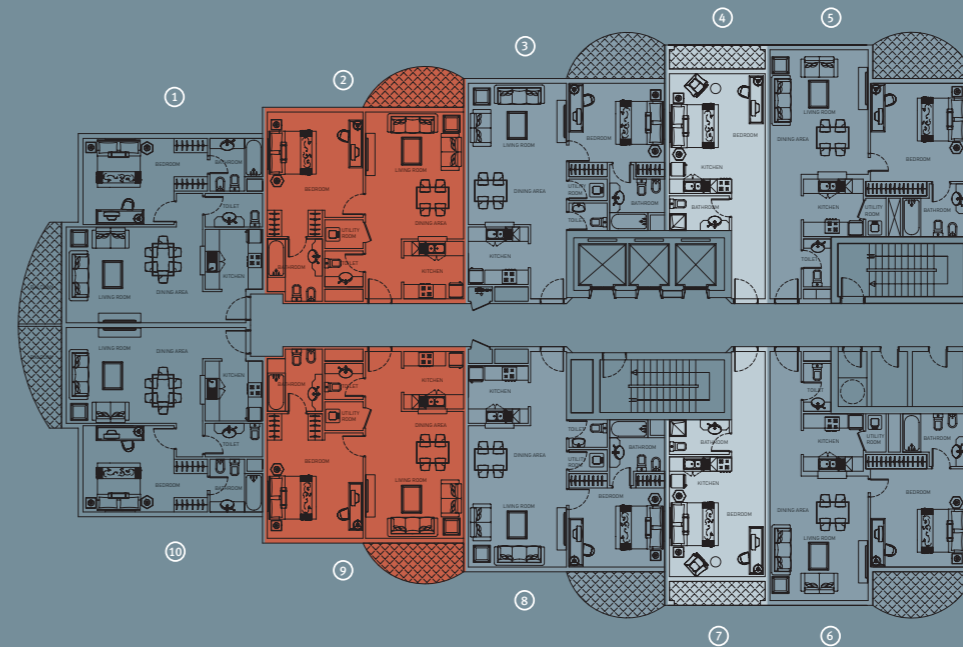
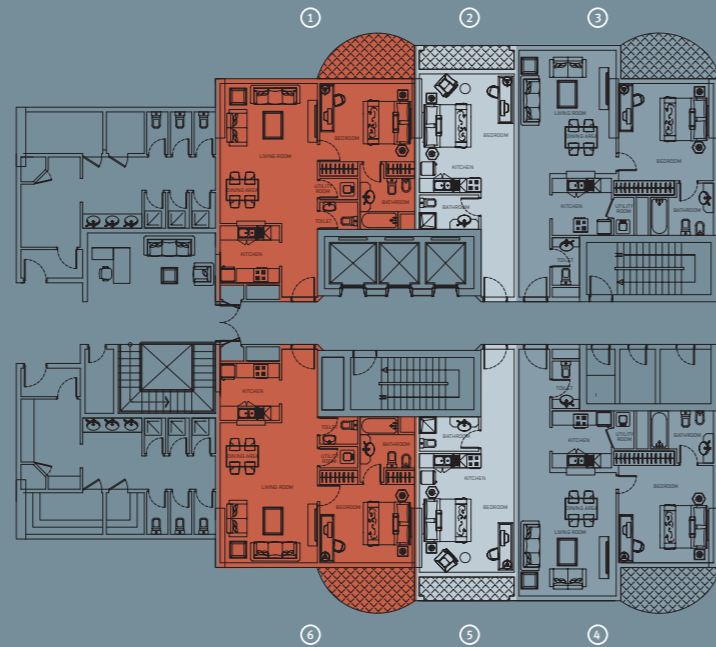
Apartment: 32.96 sq m (354.8 sq ft)
 Balcony: 4.30 sq m (46.3 sq ft)
 Total: 37.26 sq m (401.1 sq ft)

ONE BEDROOM TYPE C (1 & 6)

Apartment: 64.44 sq m (693.6 sq ft)
 Balcony: 6.35 sq m (68.4 sq ft)
 Total: 70.79 sq m (762.0 sq ft)

ONE BEDROOM TYPE D (3 & 4)

Apartment: 68.19 sq m (734.0 sq ft)
 Balcony: 6.44 sq m (69.3 sq ft)
 Total: 74.63 sq m (803.3 sq ft)



STUDIO (4 & 7)

Apartment: 32.96 sq m (354.8 sq ft)
 Balcony: 4.30 sq m (46.3 sq ft)
 Total: 37.26 sq m (401.1 sq ft)

ONE BEDROOM TYPE A (1 & 10)

Apartment: 64.63 sq m (695.7 sq ft)
 Balcony: 5.86 sq m (63.1 sq ft)
 Total: 70.49 sq m (758.8 sq ft)

ONE BEDROOM TYPE B (2 & 9)

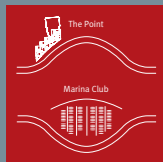
Apartment: 67.73 sq m (729.0 sq ft)
 Balcony: 5.66 sq m (61.0 sq ft)
 Total: 73.39 sq m (790.3 sq ft)

ONE BEDROOM TYPE C (3 & 8)

Apartment: 64.44 sq m (693.6 sq ft)
 Balcony: 6.35 sq m (68.4 sq ft)
 Total: 70.79 sq m (762.0 sq ft)

ONE BEDROOM TYPE D (5 & 6)

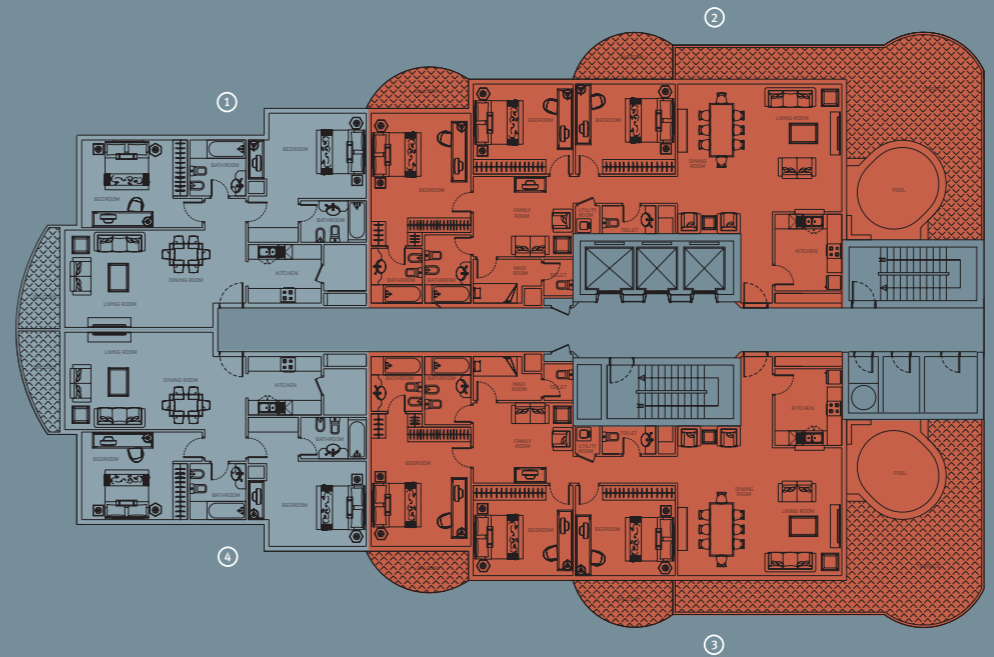
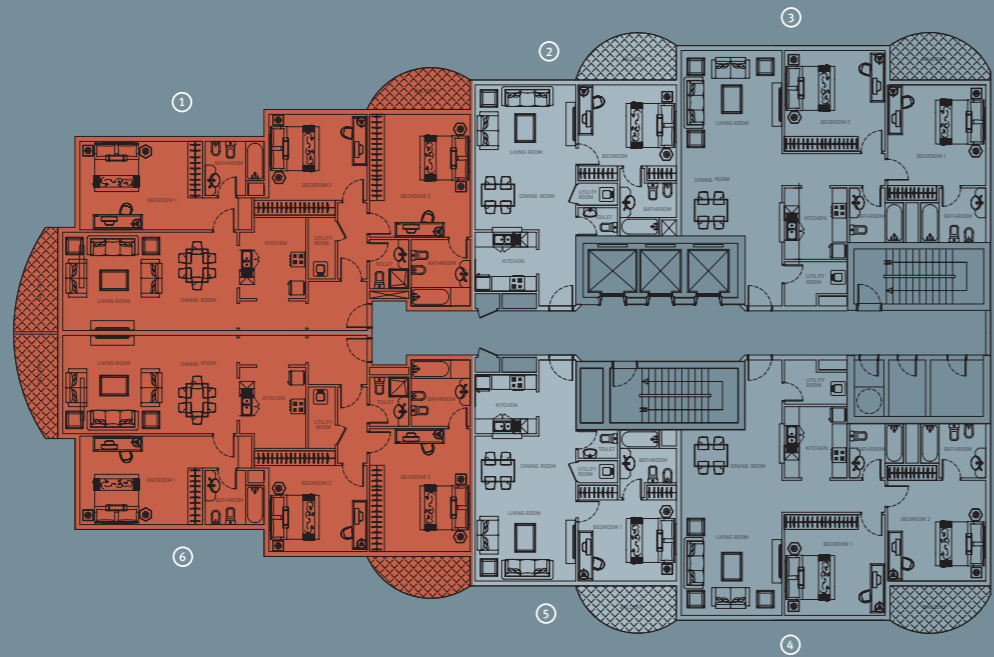
Apartment: 68.19 sq m (734.0 sq ft)
 Balcony: 6.44 sq m (69.3 sq ft)
 Total: 74.63 sq m (803.3 sq ft)



ONE BEDROOM TYPE C (2 & 5)
 Apartment: 64.44 sq m (693.6 sq ft)
 Balcony: 6.35 sq m (68.4 sq ft)
 Total: 70.79 sq m (762.0 sq ft)

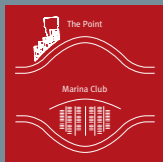
TWO BEDROOM TYPE A (3 & 4)
 Apartment: 105.53 sq m (1,135.9 sq ft)
 Balcony: 6.44 sq m (69.3 sq ft)
 Total: 111.97 sq m (1,205.2 sq ft)

THREE BEDROOM TYPE A (1 & 6)
 Apartment: 137.29 sq m (1,477.8 sq ft)
 Balcony: 11.52 sq m (124.0 sq ft)
 Total: 148.81 sq m (1,601.8 sq ft)



TWO BEDROOM TYPE B (1 & 4)
 Apartment: 97.05 sq m (1,044.6 sq ft)
 Balcony: 5.95 sq m (64.0 sq ft)
 Total: 103.00 sq m (1,108.6 sq ft)

THREE BEDROOM TYPE B (2 & 3)
 Apartment: 155.48 sq m (1,673.6 sq ft)
 Balcony: 68.04 sq m (732.4 sq ft)
 Total: 223.52 sq m (2,406.0 sq ft)

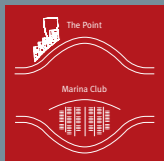
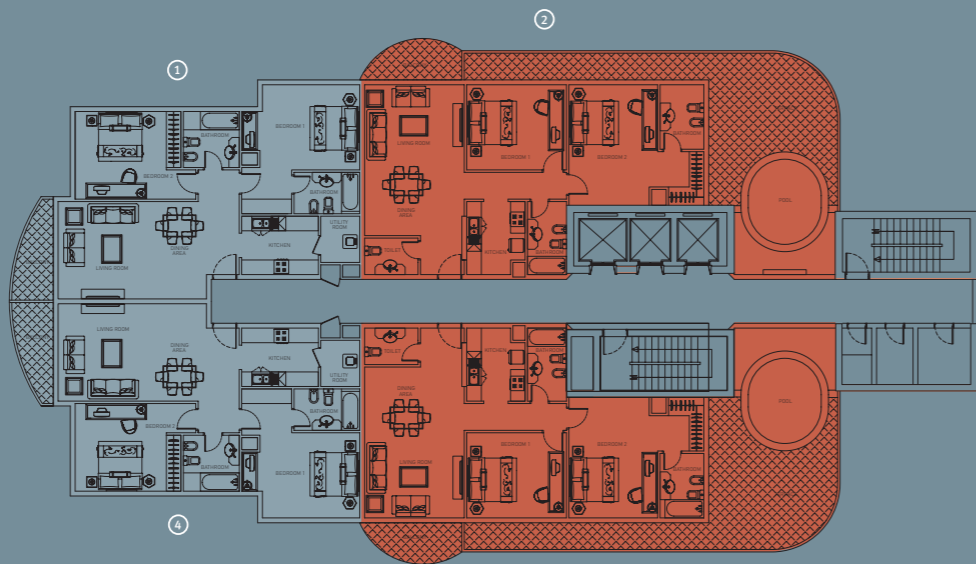


TWO BEDROOM TYPE B (1 & 4)

Apartment: 97.05 sq m (1,044.6 sq ft)
 Balcony: 5.95 sq m (64.0 sq ft)
 Total: 103.00 sq m (1,108.6 sq ft)

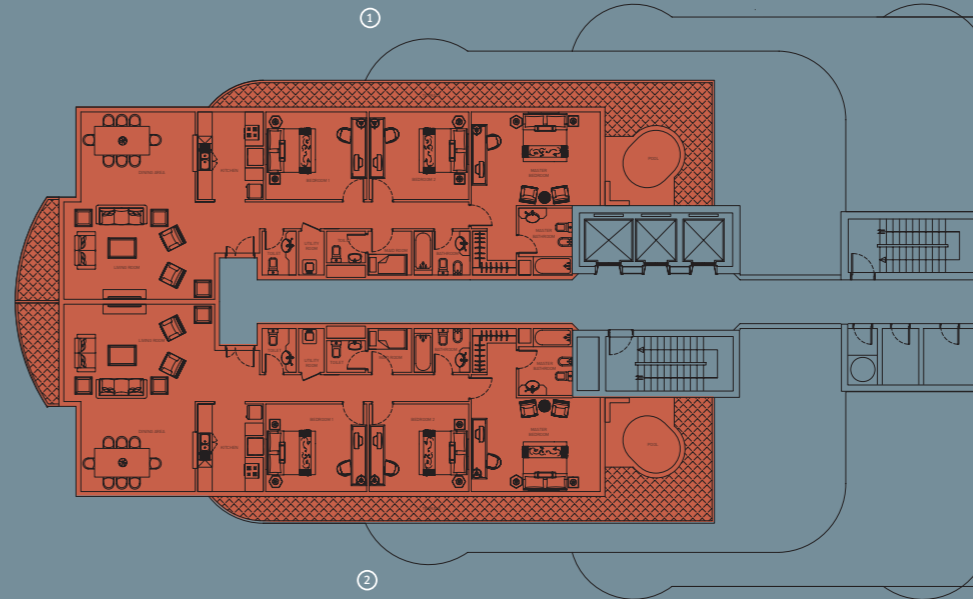
TWO BEDROOM TYPE C (2 & 3)

Apartment: 98.62 sq m (1,061.5 sq ft)
 Balcony: 64.97 sq m (699.3 sq ft)
 Total: 163.59 sq m (1,760.8 sq ft)



THREE BEDROOM TYPE B (1 & 2)

Apartment: 155.48 sq m (1,673.6 sq ft)
 Balcony: 68.04 sq m (732.4 sq ft)
 Total: 223.52 sq m (2,406.0 sq ft)



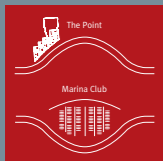
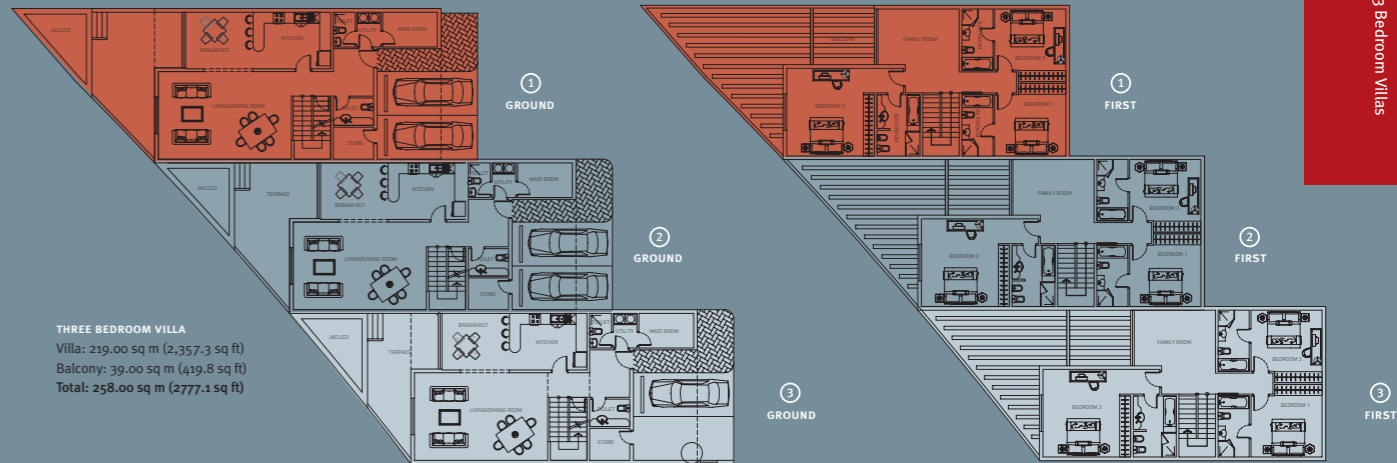
THE POINT LUXURY VILLAS

Sitting directly at the Water's Edge and hugging the promenade of this spectacular marina, The Point boasts 3 luxurious 3 bedroom duplex villas and a magnificent 4 bedroom corner property which offer a very rare and appealing marina opportunity.

SITTING DIRECTLY AT THE WATER'S EDGE

THE POINT 3 BED LUXURY VILLAS

This luxurious 3 bedroom duplex villa presents a very distinctive and much sought after waterside property. Taking full advantage of this premier location each villa showcases spacious living and kitchen areas with large windows offering direct marina views and glass doors opening out onto a private marina terrace complete with a personal Jacuzzi. The upper floor is home to a second reception room opening out onto a private marina balcony and presents 3 bedrooms each complete with their own en-suite bathrooms, with the master bedroom occupying premier position and directly looking out across the marina and the Dubai Yacht Club. This spectacular villa has the additional convenience of 2 private car parking spaces and an additional maids room.



THE POINT 4 BED LUXURY VILLA

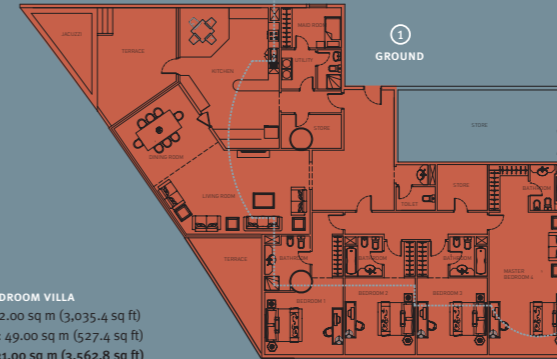
This unique 4 bedroom villa occupies the ultimate position within this admired location, and will arguably present one of the most prestigious addresses in the whole of Dubai Marina. This corner pose guarantees each of the 4 en-suite bedrooms striking views across the widest stretch of Dubai Marina and out over the yacht club itself. A generous lounge and spacious kitchen area both open out to the first of 2 terraces which offers a spectacular corner Jacuzzi. This one-of-a-kind villa is completed by a personal entrance, 3 private car parking space and an additional maids room.

FOUR BEDROOM VILLA

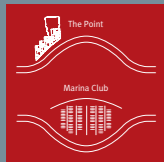
Villa: 282.00 sq m (3,035.4 sq ft)

Balcony: 49.00 sq m (527.4 sq ft)

Total: 331.00 sq m (3,562.8 sq ft)



LOCATION OF THE POINT APARTMENTS



to explore this very unique opportunity in further detail or to find out about your future home on the world's most prestigious marina telephone Select Property on 0870 111 0000