

THE TORCH



Select Property give notice that these particulars are produced in good faith and set out as a general guide only which does not constitute any part of an offer or contract. They are believed to be correct at the time of publication.

Pictures, layouts and other details within this brochure are indicative only and may change from time to time in accordance with final designs of the project and the planning permissions.



Imagine...



THE TORCH
DUBAI MARINA

A life where your terrace opens to views across the foremost marina in the world. A waterfront as spectacular at night as it is in the day. A life that offers all the comforts and security of an exclusive waterfront community. A life at The Torch Dubai Marina offers all of this and more....

Dubai

A residential paradise

Situated in the United Arab Emirates, Dubai is not only the region's flourishing commercial centre but a magnet for tourists and those seeking a luxurious, prosperous lifestyle.

Dubai is a city with a complete vision, a city that demands and delivers quality. From the moment you step off the plane you start to experience a truly unique feeling. Whether for business or pleasure Dubai is rich with every contemporary comfort, and offers a lifestyle to match any of the world's most prestigious cities.



Combining this traditional merchant's city, its seafaring heritage and the elegance of its architectural towers, with pristine sandy beaches and turquoise seas, Dubai is host to some of the most ambitious and famous projects in the world.

Based upon a bedrock of safety, opulence and enjoyment coupled with a unique blend of natural retreats and manmade wonders it is simple to see how this tax-free haven is fast establishing itself as a residential paradise.



Races & Regattas

A sporting capital

Dubai has a lifestyle to compliment all tastes; the region is a fusion of natural wonders, historic monuments, stunning recreation and the finest hospitality the world has to offer.

Dubai is the sporting capital of the region, playing host to many world-class events including the Dubai World Cup horse race, the Dubai Desert Classic golf tournament, the Dubai Rugby Sevens and offers an abundance of fantastic sporting and leisure facilities for you to enjoy.



For water-lovers Dubai offers it all, from cruising and angling to diving and wind surfing, and is home to some of the world's most talked about waterfront developments.

Dubai Marina

Ideally located next to Dubai's most famous beaches, quality beach clubs, premier hotels and the manmade Palm Island; celebrated as the eighth wonder of the world, it is plain to see why Dubai Marina is widely recognised as one of the world's foremost marinas and acknowledged as the height of Dubai living.



On top of the world

A new landmark on the horizon



The Torch residence

The Torch stands proudly at the mouth of Dubai Marina, right in the heart of the emirate's most celebrated waterfront projects. This much envied location possesses stunning views spanning the length of the marina itself but also out across Jumeirah Beach, the Palm Jumeirah and beyond to the ambitious island project known as 'The World'.

This 345 metre landmark development is as spectacular at night as it is in the day, its lustrous architectural design shimmers off this magnificent waterfront with the iconic Torch design creating an exciting addition to the Dubai skyline.



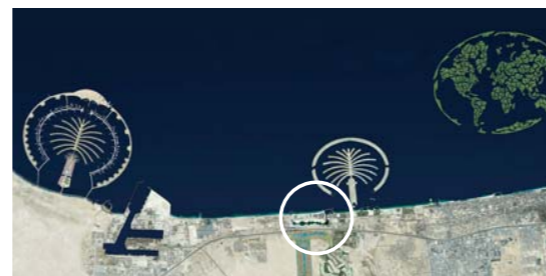
On top of the world

A new landmark on the horizon

The 74 story residential tower has been designed specifically to compliment this fantastic marina location by award winning architects Khatib & Alami. The Torch boasts 504 luxury apartments to suit every desire, with all 1, 2 and 3 bedroom apartments and stunning duplex penthouses opening to spacious balconies with unparalleled views over the very best of Dubai.

Whether you are looking for a luxurious home or a solid investment, The Torch Dubai Marina is difficult to overlook and offers the perfect foundation for your future aspirations.

The Torch is ideally located at the entrance to Dubai Marina, perfectly positioned amidst the tranquility and luxury of New Dubai and a stone's throw from some of Dubai's most exciting landmarks.



Aerial shot of marina location.

Naturally the marina is something of a landmark in itself, home to some of the world's most luxurious private boats with The Torch opening out onto one of the premier mooring sites. The marina's promenade is home to some of Dubai's finest shops and restaurants and offers a very sophisticated social scene, with a wealth of top hotels including the Burj Al Arab within easy walking distance.

Adjacent to The Torch Dubai Marina is Media City, one of Dubai's newest and prominent commercial districts, as well as both the Emirates and the Colin Montgomery golf courses.

the pinnacle of modern living

Each spacious apartment offers large windows throughout and exceptional balcony space, with views to compliment both the location and height of this sensational development. Each specially designed room is aimed towards the pinnacle of modern living, with fully-finished luxurious, elegant bathrooms and kitchens as well as internet and telecommunications systems.



Illustration of Torch position on marina

The Torch also offers

- State of the art, temperature controlled swimming pools
- Sauna, steam room and spa
- Modern gymnasium
- Shopping and dining facilities
- Secure underground parking
- 24 hour security
- Concierge desk and spacious lobby
- Professional housekeeping service
- Children's play area
- Barbeque deck
- 24 Hour maintenance and supervision



A tall order

Spacious luxury living

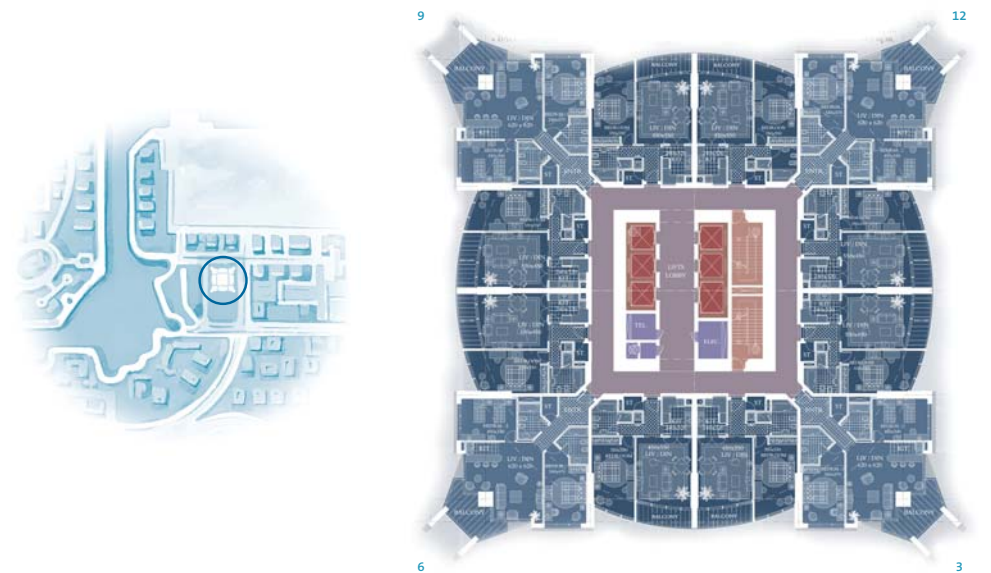
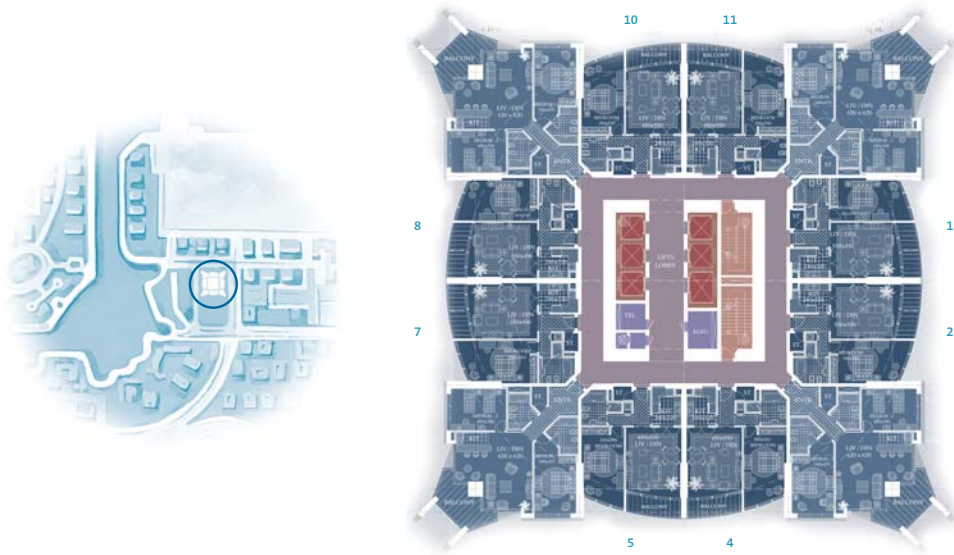
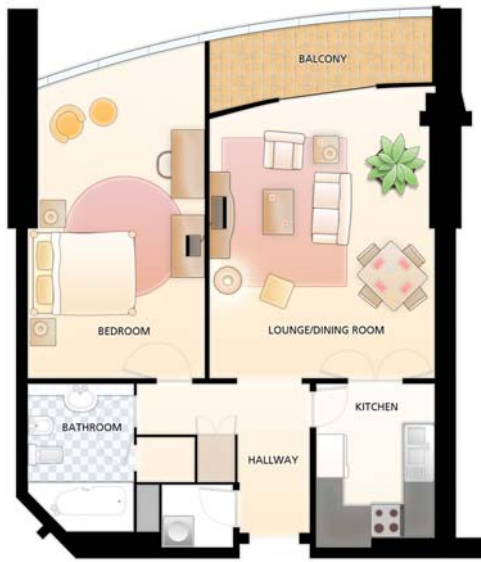
All the apartments have been designed with space, light and style in mind.

With such fantastic views of the marina and the ocean the defining feature in the Torch is the large windows and plentiful balconies.

Inside the apartments, contemporary styling opulently uses marble, granite, wood and stainless steel to enhance the gracious room sizes. All this completes the height of spacious luxury living...



The Torch Floorplans



Floors 6-21

1 BEDROOM APARTMENTS (128 units)

Approx Net Area: 84m² (904 sq.ft)
Approx Gross Area: 105m² (1128 sq.ft)

Living / Dining Room 4.6 x 5.3m
Kitchen 2.5 x 3.1m
Bedroom one 3.5 x 5.25m

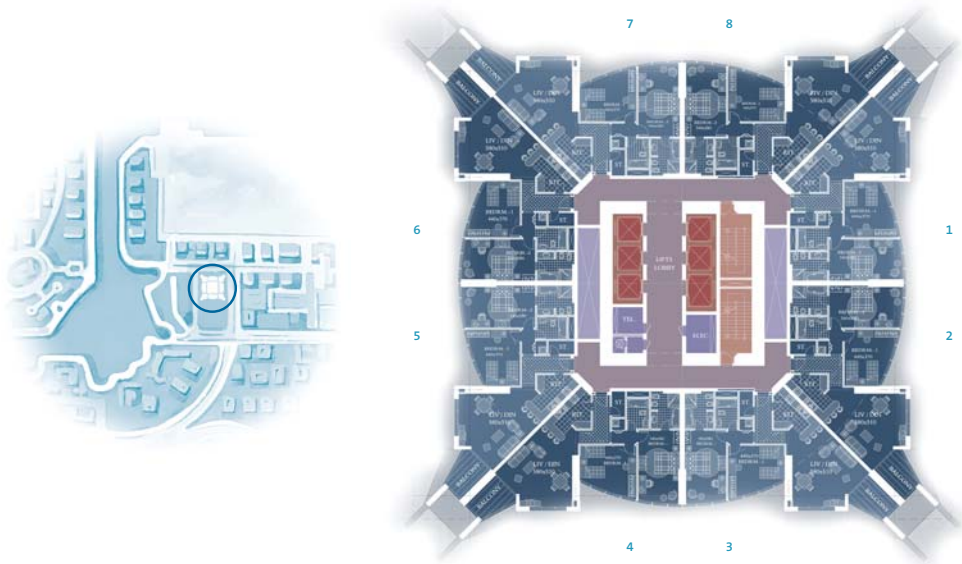


Floors 6-21

2 BEDROOM APARTMENTS (64 units)

Approx Net Area: 105m² (1128 sq.ft)
Approx Gross Area: 131m² (1407 sq.ft)

Living / Dining Room 6.05 x 6.05m
Kitchen 2.6 x 1.6m
Bedroom one 3.4 x 4.35m
Bedroom two 4.15 x 3.40m



Floors 23-53

2 BEDROOM APARTMENTS (240 units)

Approx Net Area: 118m² (1270 sq.ft)

Approx Gross Area: 148m² (1590 sq.ft)

Living / Dining Room 5.8 x 5.1m

Kitchen 4.5 x 2.0m

Bedroom one 4.5 x 3.75m

Bedroom two 3.4 x 5.6m



Floors 55-71

3 BEDROOM APARTMENTS (68 units)

Approx Net Area: 167m² (1793 sq.ft)

Approx Gross Area: 209m² (2244 sq.ft)

Living / Dining Room 6.7 x 6.10m

Kitchen 3.0 x 3.2m

Bedroom one 5.25 x 4.35m

Bedroom two 3.90 x 3.75m

Bedroom three 3.60 x 5.25m

Live the high life

To explore this unique opportunity in more detail or to find out more about your home on the marina call now on

Further information and details

